

# \$319,900 - 30 Saamis Meadows Lane Sw, Medicine Hat

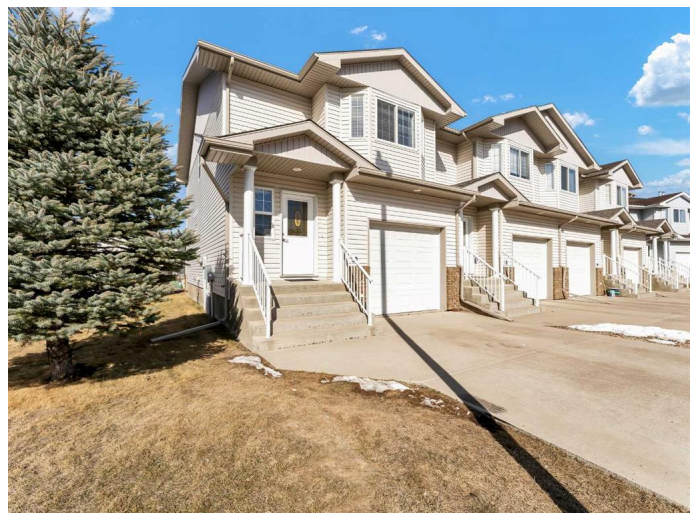
MLS® #A2199507

**\$319,900**

3 Bedroom, 3.00 Bathroom, 1,506 sqft  
Residential on 0.00 Acres

SW Southridge, Medicine Hat, Alberta

Don't miss out on this fully developed end unit 2 storey townhouse condo in Saamis Meadows. A quiet community close to coulee trails, parks, playgrounds, schools, and other amenities. The functional main floor plan offers a beautiful kitchen/dining area featuring warm cabinetry, granite countertops, under cabinet lighting, stainless appliances, a corner pantry, breakfast island, and a 2-piece powder room off the entry. The main living area has beautiful hardwood floors and is flooded with natural light, and also provides direct access to the back deck. The upper level has 3 bedrooms, 4 piece main bathroom and a stackable washer/dryer for maximum convenience. The impressively sized primary bedroom hosts double closets, and a 4-piece bath ensuite. The basement is fully finished with a large family room, plus a murphy bed for those added guests if needed. This one-owner home is impressive. No age restrictions and pets are allowed (some restrictions), making this a desirable property that won't last long! Low condo fees of just \$280/month include your exterior maintenance and insurance, reserve fund contributions, snow removal, and landscaping. Nothing to do but move in! Contact your local neighbourhood REALTOR® today!



Built in 2006

**Essential Information**

|                |               |
|----------------|---------------|
| MLS® #         | A2199507      |
| Price          | \$319,900     |
| Bedrooms       | 3             |
| Bathrooms      | 3.00          |
| Full Baths     | 2             |
| Half Baths     | 1             |
| Square Footage | 1,506         |
| Acres          | 0.00          |
| Year Built     | 2006          |
| Type           | Residential   |
| Sub-Type       | Row/Townhouse |
| Style          | 2 Storey      |
| Status         | Active        |

### **Community Information**

|             |                           |
|-------------|---------------------------|
| Address     | 30 Saamis Meadows Lane Sw |
| Subdivision | SW Southridge             |
| City        | Medicine Hat              |
| County      | Medicine Hat              |
| Province    | Alberta                   |
| Postal Code | T1B 0A5                   |

### **Amenities**

|                |                        |
|----------------|------------------------|
| Amenities      | Parking                |
| Parking Spaces | 2                      |
| Parking        | Single Garage Attached |
| # of Garages   | 1                      |

### **Interior**

|                   |  |
|-------------------|--|
| Interior Features | Granite Counters, Kitchen Island, Pantry, Vinyl Windows  |
| Appliances        | Central Air Conditioner, Dishwasher, Garage Control(s), Microwave Hood Fan, Refrigerator, Stove(s), Washer/Dryer, Window Coverings |
| Heating           | Forced Air   |
| Cooling           | Central Air  |
| Has Basement      | Yes  |
| Basement          | Finished, Full   |

### **Exterior**

|                   |       |
|-------------------|-------|
| Exterior Features | Other |
|-------------------|-------|

|                 |   |
|-----------------|---|
| Lot Description | Landscaped, Low Maintenance Landscape, Underground Sprinklers |
| Roof            | Asphalt Shingle   |
| Construction    | Mixed   |
| Foundation      | Poured Concrete   |

### **Additional Information**

|                |                  |
|----------------|------------------|
| Date Listed    | March 21st, 2025 |
| Days on Market | 21               |
| Zoning         | R-MD             |

### **Listing Details**

|                |                            |
|----------------|----------------------------|
| Listing Office | RE/MAX MEDALTA REAL ESTATE |
|----------------|----------------------------|

Data is supplied by Pillar 9â„¢ MLSÂ© System. Pillar 9â„¢ is the owner of the copyright in its MLSÂ© System. Data is deemed reliable but is not guaranteed accurate by Pillar 9â„¢. The trademarks MLSÂ©, Multiple Listing ServiceÂ© and the associated logos are owned by The Canadian Real Estate Association (CREA) and identify the quality of services provided by real estate professionals who are members of CREA. Used under license.